

# AUTOGLIDE

## smart entry system

### QUICK GUIDE TO CONFIGURING YOUR AUTOGLIDE SMART ENTRY SYSTEM

This guide gives a quick overview to setting up your Autoglide Smart Entry System and troubleshooting any configuration problems.

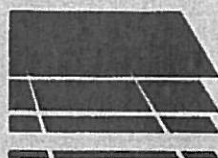
Full details and **IMPORTANT SAFETY INSTRUCTIONS\*** can be found in both the fitting instructions and the user instruction manual.

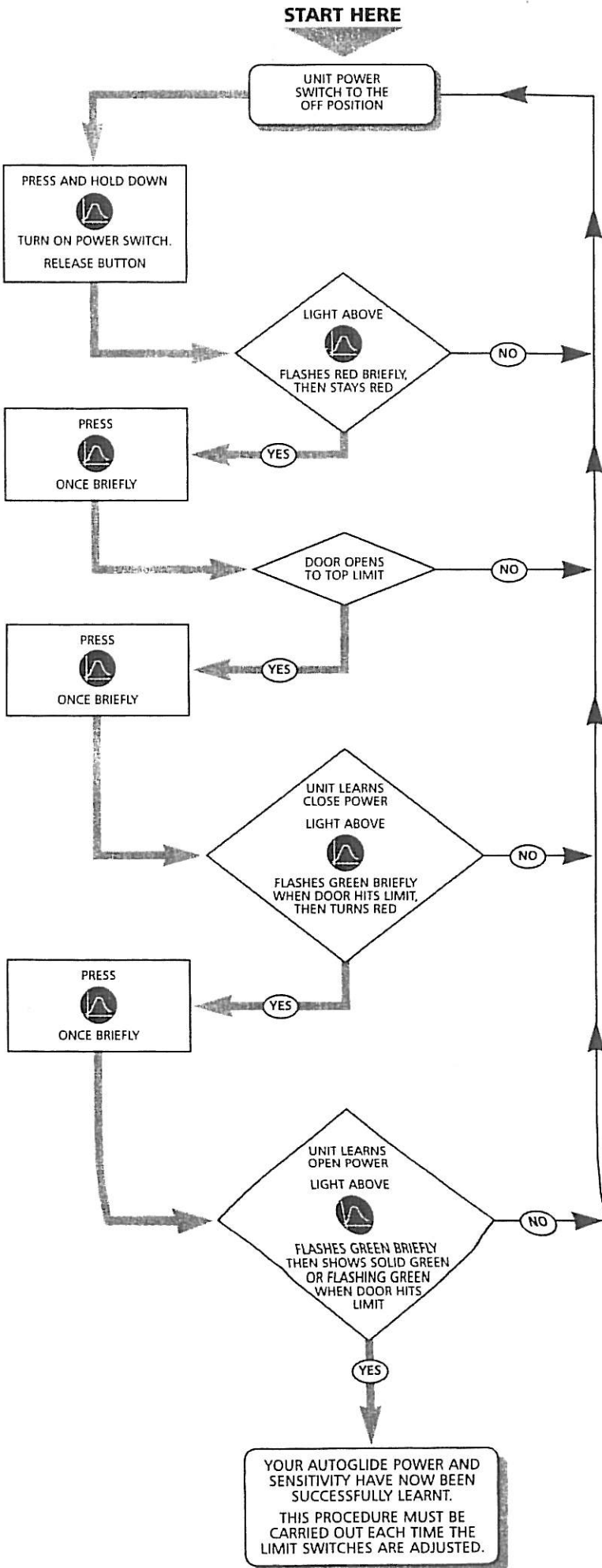
\*Please do not attempt any adjustments before familiarising yourself with these.

#### CONTENTS:

1. Configuring the power and sensitivity.
2. Configuring the child lock facility.
3. Configuring the remote handset – single unit.
4. Configuring the remote handset – two units.
5. Clearing the remote handset.

**CARDALE**<sup>®</sup>  
**GARAGE DOORS**  
Strong • Stylish • Secure





# AUTOGLIDE

smart entry system

## 1. CONFIGURING THE POWER AND SENSITIVITY

Before commencing this procedure please ensure that:

- Limit switches are adjusted to their nominal positions.
- All latches operate correctly.
- Drive pin is correctly engaged.
- Door is clear of any obstructions
- Door is in the half open position.
- **UNIT POWER SWITCH IS IN THE OFF POSITION.**

### NOTES

All LED's mentioned are found on the control cover.

Graphical symbols indicate buttons found on control cover.

# AUTOGLIDE

smart entry system

## 2. CONFIGURING THE CHILD LOCK FACILITY

Before commencing this procedure please ensure that:


- Door is clear of any obstructions.
- Power is switched on at mains plug.
- **UNIT POWER SWITCH IS IN THE OFF POSITION.**

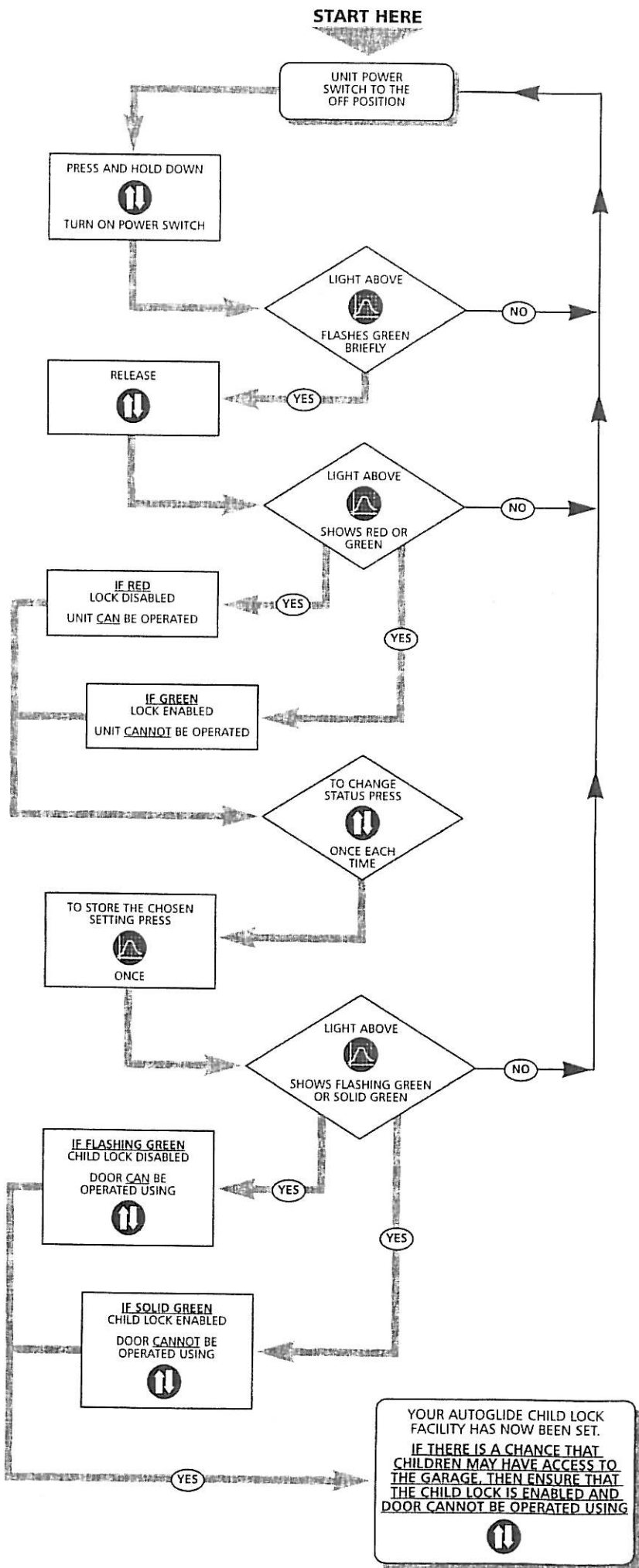
### NOTES

All LED's mentioned are found on the control cover.

Graphical symbols indicate buttons found on control cover.

### SAFETY NOTE

IF THERE IS A CHANCE THAT CHILDREN MAY HAVE ACCESS TO THE GARAGE, THEN ENSURE THAT THE CHILD LOCK IS ENABLED AND DOOR CANNOT BE OPERATED USING 



# AUTOGLIDE

## smart entry system

### 3. CONFIGURING THE REMOTE HANDSET-SINGLE UNIT

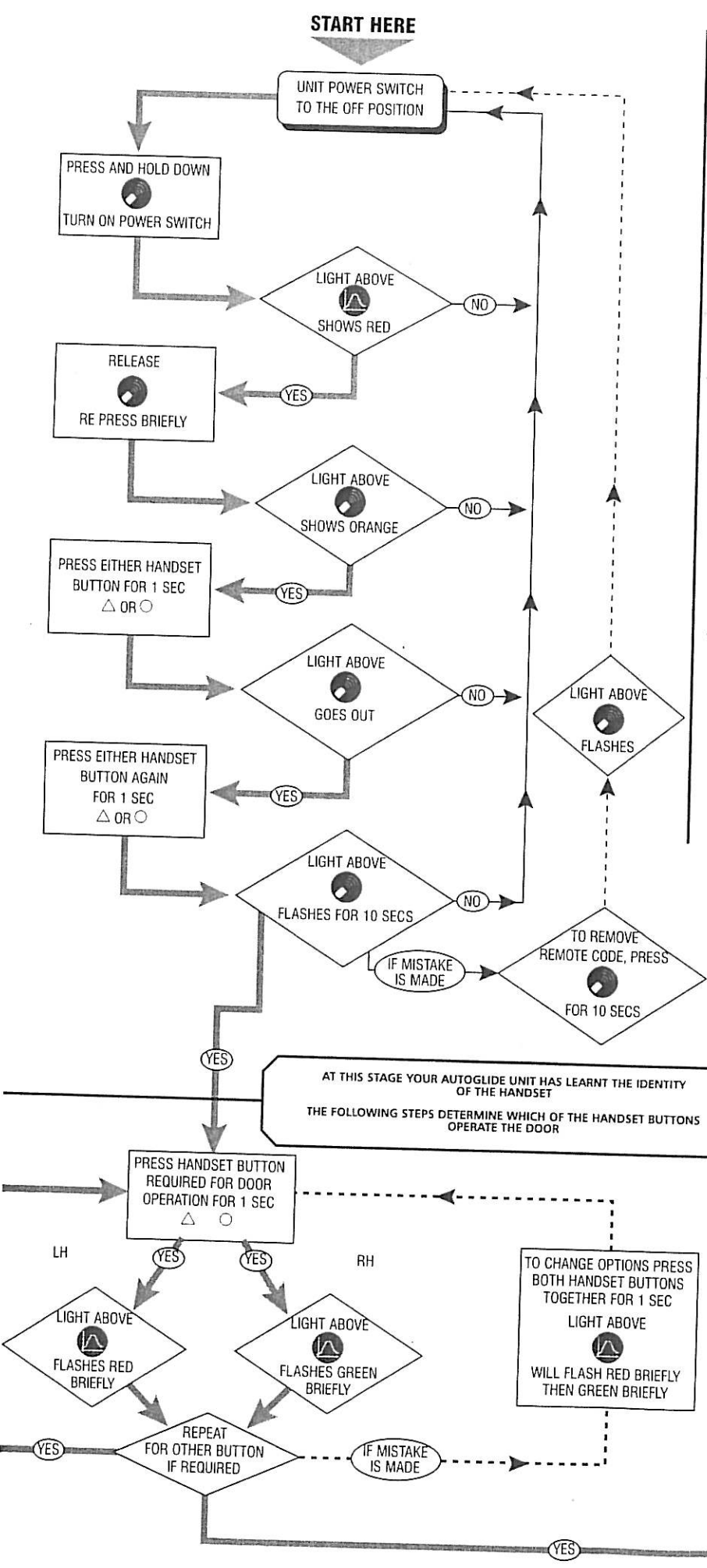
Before commencing this procedure please ensure that:

- Power is switched on at mains plug.
- **UNIT POWER SWITCH IS IN THE OFF POSITION.**

#### NOTES

All LED's mentioned are found on the control cover.

Graphical symbols indicate buttons found on control cover.



# AUTOGLIDE

smart entry system

## 4. CONFIGURING THE REMOTE HANDSET-TWO UNITS

Before commencing this procedure please ensure that:

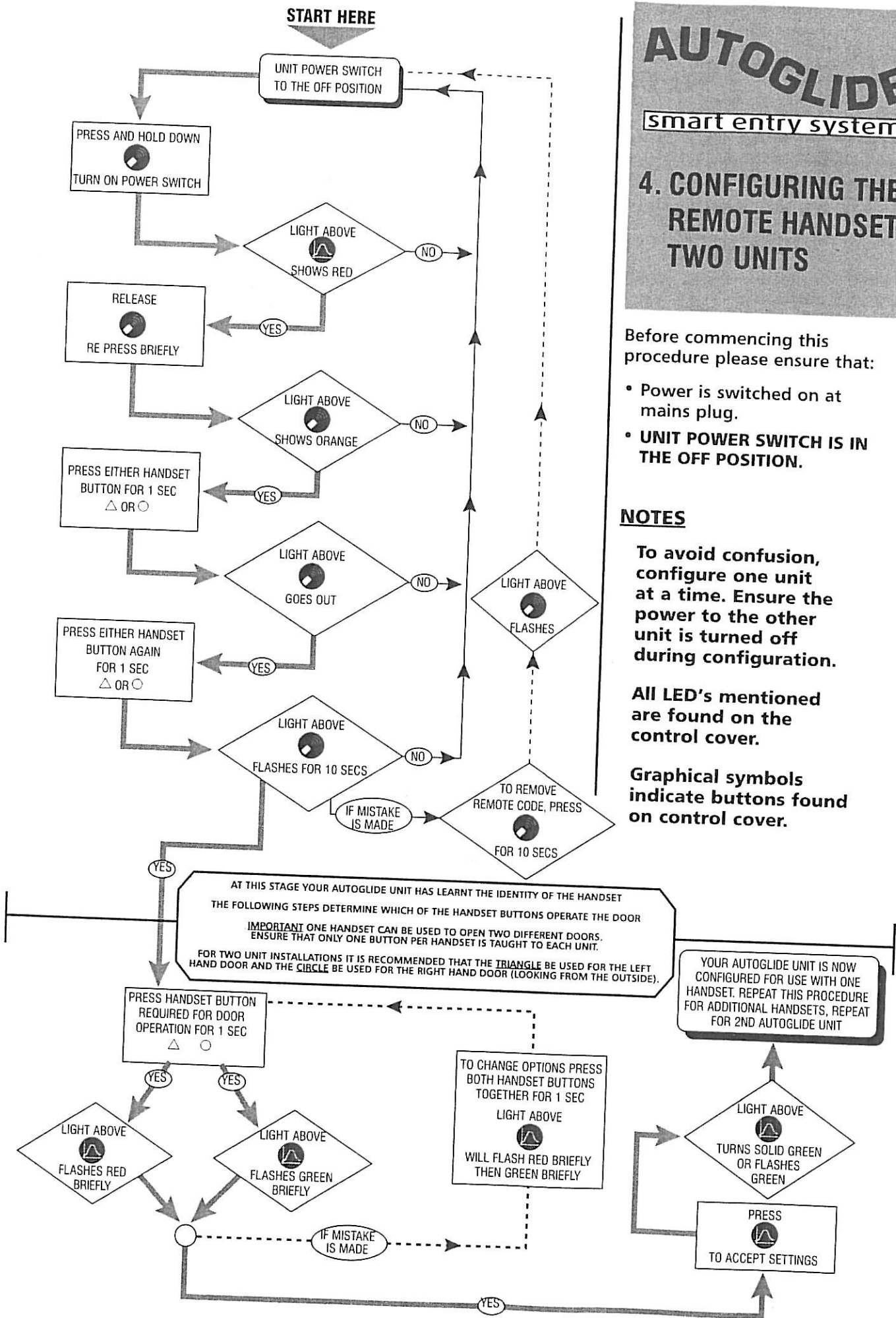
- Power is switched on at mains plug.
- **UNIT POWER SWITCH IS IN THE OFF POSITION.**

### NOTES

To avoid confusion, configure one unit at a time. Ensure the power to the other unit is turned off during configuration.

All LED's mentioned are found on the control cover.

Graphical symbols indicate buttons found on control cover.



# AUTOGLIDE

smart entry system

## 5. CLEARING THE REMOTE HANDSET

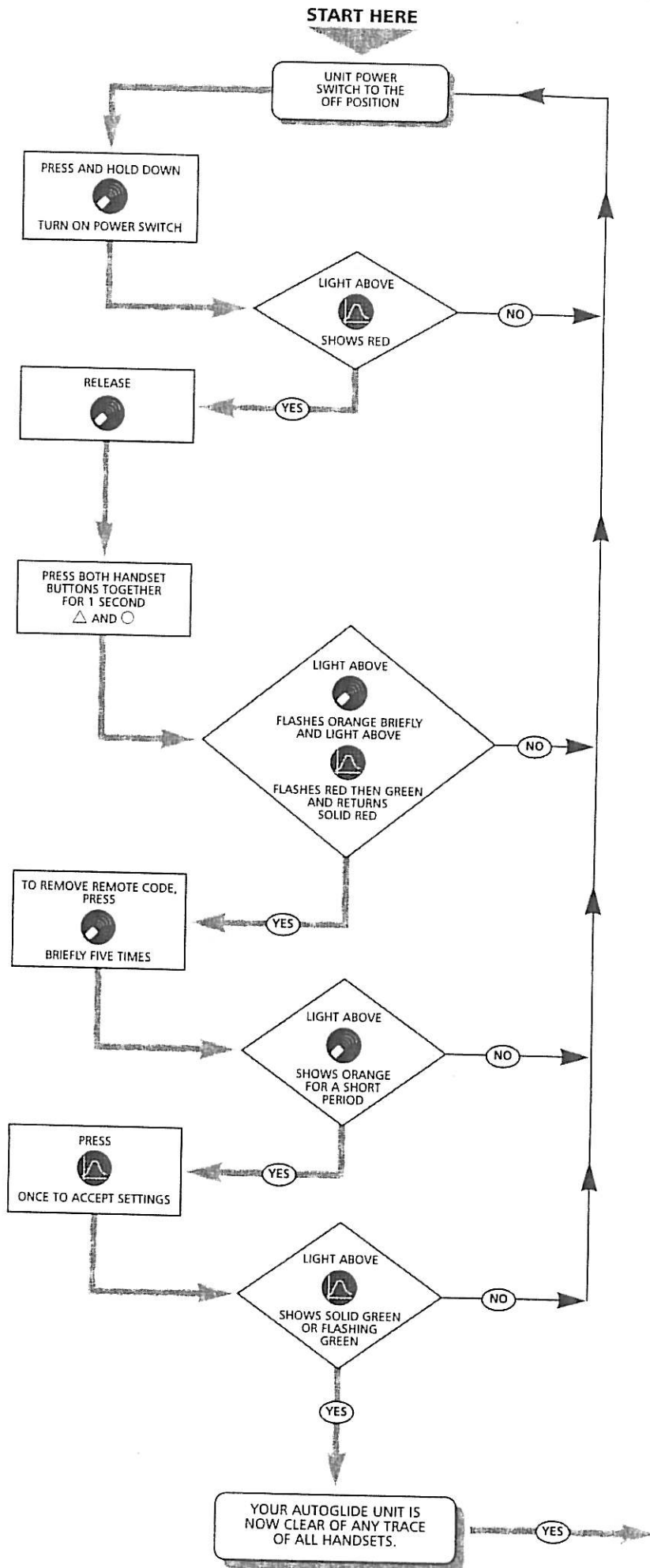
Before commencing this procedure please ensure that:

- Power is switched on at mains plug.
- **UNIT POWER SWITCH IS IN THE OFF POSITION.**

### NOTES

All LED's mentioned are found on the control cover.

Graphical symbols indicate buttons found on control cover.



**NOTE**  
IF ANY OTHER HANDSETS ARE STILL REQUIRED TO OPERATE THE UNIT, THEY WILL NEED RE-CONFIGURING AS PER SHEET 3 OF THIS BOOKLET.